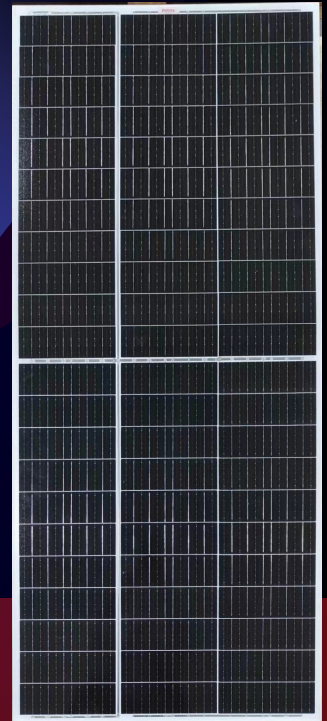


# V SERIES

*solar way ,shining life*







## NB-215~225W-TMT



### ● V SERIES

NABAI redefined the high-efficiency module series by integrating 210mm\*210mm silicon wafers with multi-busbar and Trisect-cut cell technologies. NABAI panel combined creative technology effectively and extremely improved the module efficiency and power output.

### ● KEY FEATURES

-  Less mismatch to get more power
-  Less power loss by minimizing the shading impact
-  Competitive low light performance
-  3 times EL test to ensure best quality
-  Ideal choice for utility and commercial scale projects by reduced BoS and improved ROI
-  Outstanding reliability proven by PVEL for stringent environment condition:
  - Sand, acid, salt and hail stones
  - 2400 Pa wind load and 5400 Pa snow load
  - Anti-PID

### ● QUALITY SYSTEM

ISO9001 / ISO14001 / ISO45001

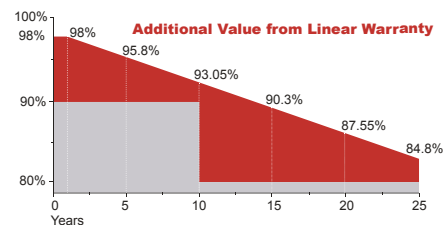
### ● PRODUCT CERTIFICATION



### ● INSURANCE

**PICC**

### ● WARRANTY



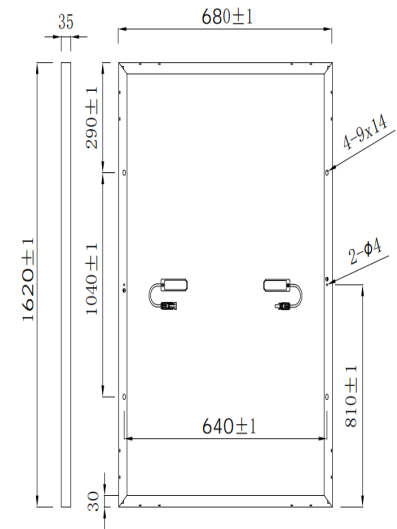
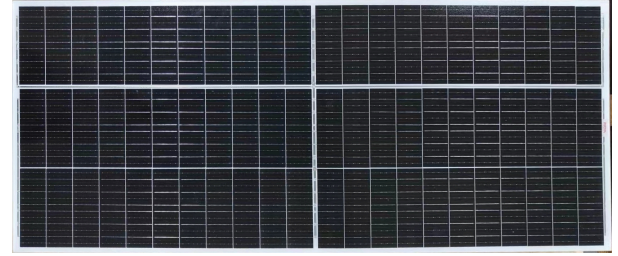
**15 YEARS** Guarantee on product material and workmanship

**25 YEARS** Linear power output warranty

## Electrical Characteristics

Module Type	NB-215W-TMT	NB-220W-TMT	NB-225W-TMT
	STC	STC	STC
Maximum Power at STC (Pmp)	215	220	225
Maximum Power Voltage (Vmp)	19.5	19.55	19.9
Maximum Power Current (Imp)	11.03	11.25	11.30
Open Circuit Voltage (Voc)	22.70	23.0	23.3
Short Circuit Current (Isc)	11.86	11.82	11.87
Module Efficiency at STC( $\eta_m$ )	19.52	19.97	20.42
Power Tolerance	(± 3%)		
Maximum System Voltage	600V DC		
Maximum Series Fuse Rating	20A		

STC: Irradiance 1000 W/m<sup>2</sup>, module temperature 25°C, AM=1.5  
Power measurement tolerance: +/-3%



## Temperature Characteristics

Pmax Temperature Coefficient	-0.34 %/°C
Voc Temperature Coefficient	-0.26 %/°C
Isc Temperature Coefficient	+0.05 %/°C
Operating Temperature	-40 ~ +85 °C
Nominal Operating Cell Temperature(NOCT)	45±2 °C

## Mechanical Specifications

External Dimensions	1620*680*35mm
Weight	10.5kg
Solar Cells	Trisect-cut G12 Mono (66pcs)
Front Glass	3.2mm AR coating tempered glass, low iron
Frame	Anodized aluminium alloy
Junction Box	IP68, 3 diodes
Output Cables	4.0mm <sup>2</sup> , 250mm(+)/350mm(-) or Customized Length
Mechanical Load	Front side 5400Pa/ Rear side 2400Pa

## Packing Configuration

	1620*680*35mm
Container	40'HQ
Pieces per Carton	2
PCS/container	1540
or Customized	

## I-V Curve

